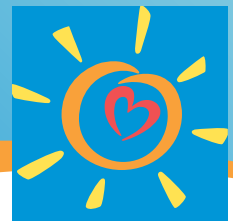


Initiation and Engagement of Alcohol and Other Drug Dependence Treatment (IET)



L.A. Care
HEALTH PLAN®

Q: Which members are included in the sample?

A: Adolescent and adult members (13 years and older) in 2016 with a new episode of **alcohol or other drug (AOD)** dependence who received the following:

- Initiation of AOD Treatment. Members who initiate treatment through an inpatient AOD admission, outpatient visit, intensive outpatient encounter or partial hospitalization within 14 days of the diagnosis
- Engagement of AOD Treatment. Members who initiated treatment and who had two or more additional services with a diagnosis of AOD within 30 days of the initiation visit

Q: What codes are used?

A: Please reference attached sample codes and Value Set Directory for additional codes

Q: What documentation is needed in the medical record?

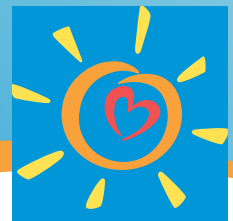
A: *None.* This measure requires **claim/encounter data** submission only using the appropriate Value Set Codes.

Q: What documentation is needed in the medical record?

A: Evidence from a claim/encounter

1. New diagnosis of alcohol or other drug (AOD) dependence and date
2. Initiation of member treatment within 14 days of the AOD diagnosis
 - a. Of these members who initiated treatment, evidence of two or more additional services (inpatient admissions, outpatient visits, intensive outpatient encounters or partial hospitalizations with any AOD diagnosis) within 30 days of the initiation treatment
 - i. Note that multiple engagement visits may occur on the same day, but they must be with different providers in order to count

Initiation and Engagement of Alcohol and Other Drug Dependence Treatment (IET)



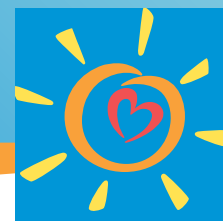
L.A. Care
HEALTH PLAN®

Q: How to improve score for this HEDIS measure?

A:

- ☑ Use of complete and accurate Value Set Codes
- ☑ Timely submission of claims and encounter data
- ☑ Consider screening all members at office visits using a substance abuse screening tool
- ☑ Perform SBIRT for members who answer positive for alcohol on the SHA or whom you suspect have an alcohol problem
- ☑ Once a member is identified with AOD diagnosis, initiate brief intervention or refer for treatment within 14 days. Then complete at least two brief interventions within 30 days of diagnosis
- ☑ When referring members out to substance abuse providers, ensure an appointment is made within 14 days of diagnosis

Initiation and Engagement of Alcohol and Other Drug Dependence Treatment (IET)



L.A. Care
HEALTH PLAN®

SAMPLE CODES

The codes listed below are not inclusive and do not represent a complete list of codes found in the NCQA HEDIS® Value Set. To ensure accurate documentation, please refer to the HEDIS® 2017 Value Set Directory located on the L.A. Care Website at:

<http://www.lacare.org/providers/provider-resources/hedis-resources>

ICD-10 codes

Refer to AOD Dependence Value Set, AOD Procedures Value Set, Detoxification Value Set

CPT codes

ED	99281-99285
IET Stand Alone Visits	98960-98962, 99078, 99201-99205, 99211-99215, 99217-99220, 99241-99245, 99341-99345, 99347-99350, 99384-99387, 99394-99397, 99401-99404, 99408, 99409, 99411, 99412, 99510
IET Visits Group 1	90791, 90792, 90832-90834, 90836-90840, 90845, 90847, 90849, 90853, 90875, 90876
IET Visits Group 2	99221-99223, 99231-99233, 99238, 99239, 99251-99255

HCPCS codes

IET Stand Alone Visits	G0155, G0176, G0177, G0396, G0397, G0409-G0411, G0443, G0463, H0001, H0002, H0004, H0005, H0007, H0015, H0016, H0020, H0022, H0031, H0034-H0037, H0039, H0040, H2000, H2001, H2010-H2020, H2035, H2036, M0064, S0201, S9480, S9484, S9485, T1006, T1012, T1015
Detoxification	H0008-H0014

Exclusion codes

Refer to AOD Dependence Value Set